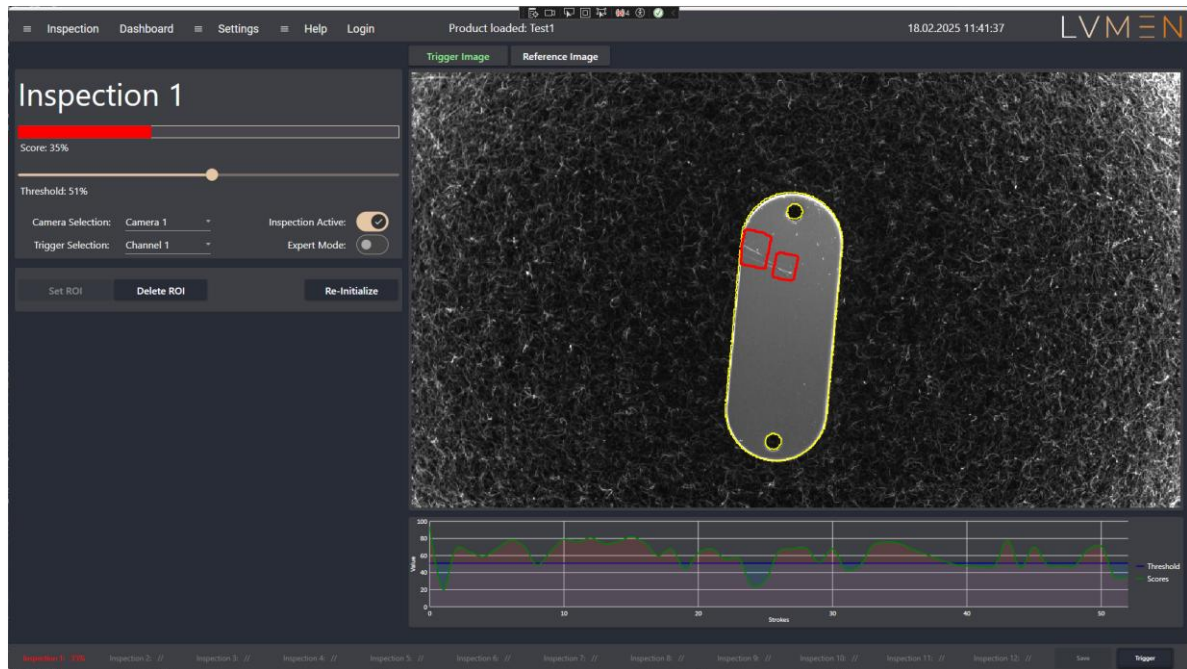
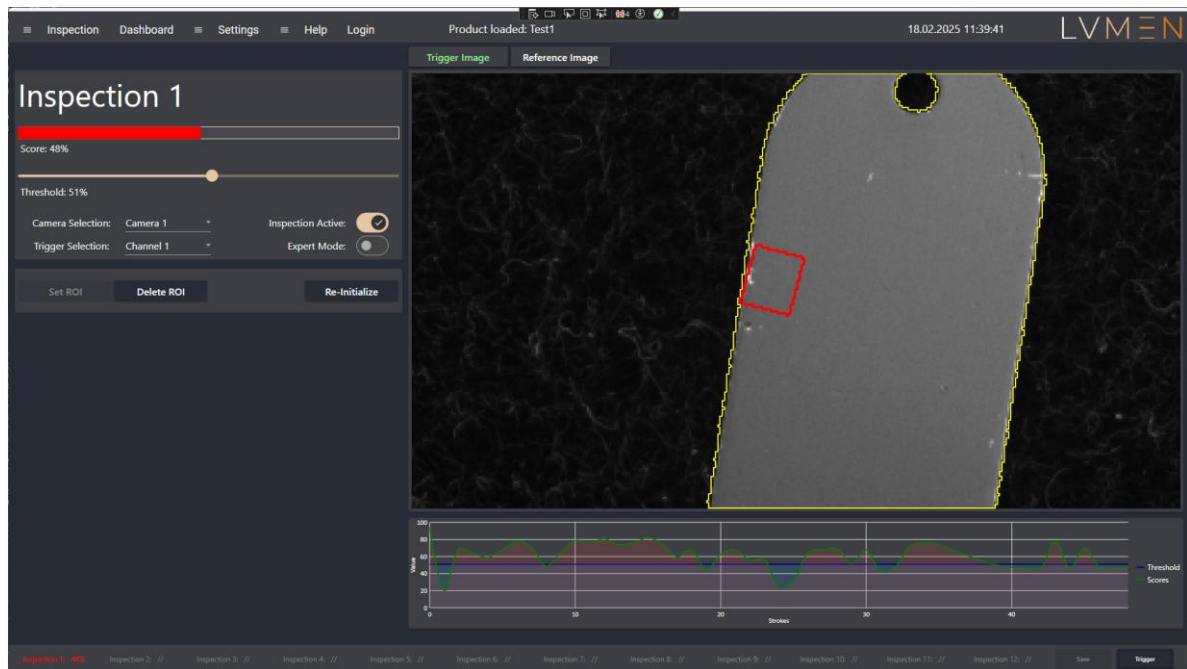
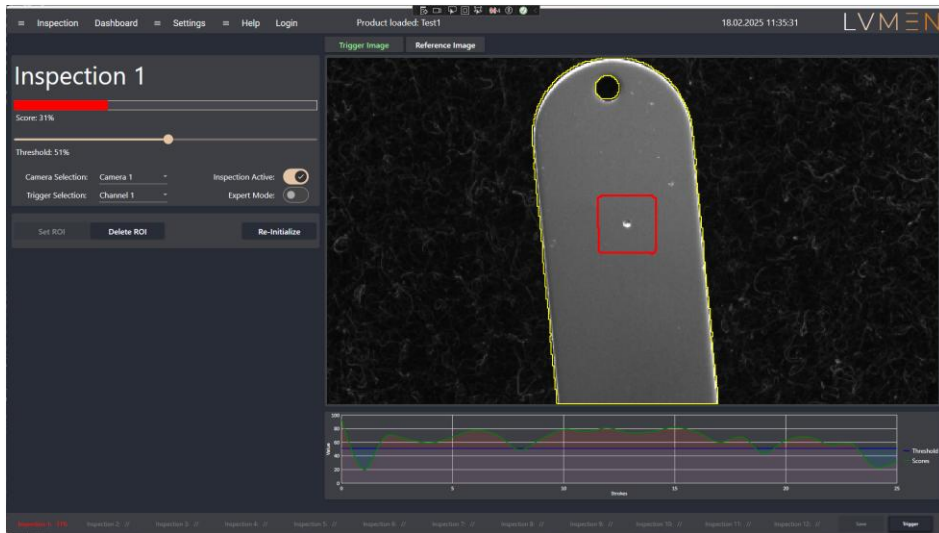


iQ-eye – AI Quality Inspection



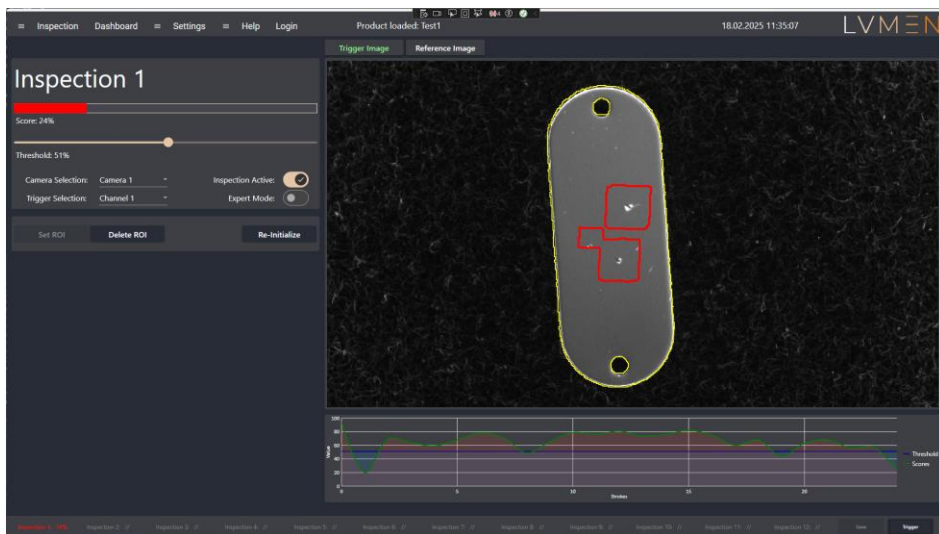
LVMEN's iQ-eye is a highly modular and cost-effective quality inspection system. With the use of AI, the system automatically learns the components to be inspected. The user does not need to provide any CAD data. This means that the iQ-eye is ready for operation in just a few minutes and can be operated by anyone.





The following quality defects can be detected with the iQ-eye:

- Foreign objects on the workpiece (mosquitos, chips, etc.)
- Scratches, cracks, breaks, dents, spots, deformations
- Holes, missing holes
- Defective joints (glue, screws, nuts)
- Contour errors, dimensional errors



A trend of the score and limit value is displayed below the inspection window, so that the operator can already read off an estimate of the trend. The images for each cycle are stored in the iQ-eye's memory so that they can be downloaded for subsequent analysis.

Increase the degree of automation of your processes by using modern inspection systems from LVMEN. Get in touch with our experts today!

E-Mail: sales@lvmen.de Phone: +49 (0) 3381 3466011